



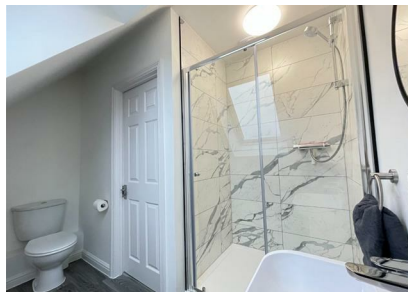
Queensway, Mildenhall, Suffolk, IP28 7JJ

Rent - £1,215 PCM Deposit - £1,401

Full Furnished - READY TO MOVE INTO This one double bedroom terraced house in Mildenhall is a fantastic opportunity for anyone looking for a ready-to-move-in property with off-road parking, enclosed outside area and a furnished interior. Located close to RAF bases and local amenities a short walk away.

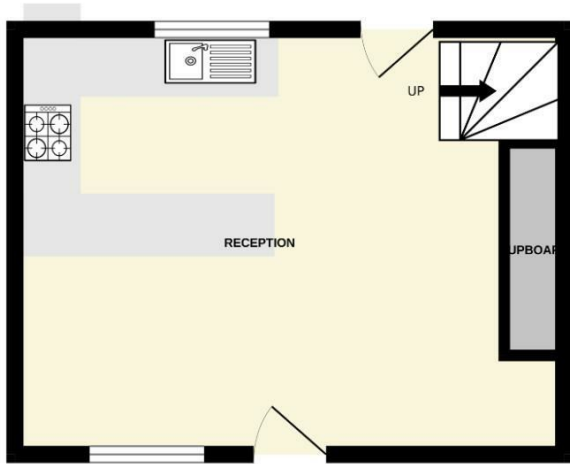
AGENTS NOTE: In accordance with The Property Ombudsman requirements, you are advised that a member of Shires staff (or their family members) have an interest in this property.

- MID TERRACED HOUSE
- 1 BEDROOM
- MODERN AND STYLISH
- APPROXIMATE SIZE - 430 SQFT
- OFF ROAD PARKING & ENCLOSED DECKED COURTYARD
- CLOSE TO RAF BASES
- GAS HEATING & ENERGY RATING - C
- FULLY FURNISHED
- COUNCIL TAX BAND - A
- AVAILABLE EARLY APRIL



Council Tax Band: A - EPC Rating: C 78

GROUND FLOOR
25.7 sq.m. (276 sq.ft.) approx.



1ST FLOOR
20.9 sq.m. (225 sq.ft.) approx.



TOTAL FLOOR AREA: 46.5 sq.m. (501 sq.ft.) approx.

Whilst every attempt has been made to ensure the accuracy of the floorplan contained here, measurements of doors, windows, rooms and any other items are approximate and no responsibility is taken for any error, omission or mis-statement. This plan is for illustrative purposes only and should be used as such by any prospective purchaser. The services, systems and appliances shown have not been tested and no guarantee as to their operability or efficiency can be given.
Made with Metropix ©2025

